

GETTING THE WHOLE JOB DONE:

Addressing climate change means reducing emissions and protecting people and resources from impacts already under way. Significant dedicated funding is required to keep our economy, health and resources resilient in a warming world. Investing 5% of total allowance value in natural resource adaptation projects will create jobs across the country that protect the resources upon which our economy, health and culture rely. These types of projects include: stream bed repair, removing invasive species, coastline restoration and installing culverts.

A road removal project, which creates jobs while helping lands adapt to climate change, is detailed below.

Jobs removing unwanted roads enhance ecosystem resiliency in the face of climate change by preventing erosion, minimizing landslides, improving water quality, and reconnecting habitats— **boosting the economy today and protecting it for the future.**

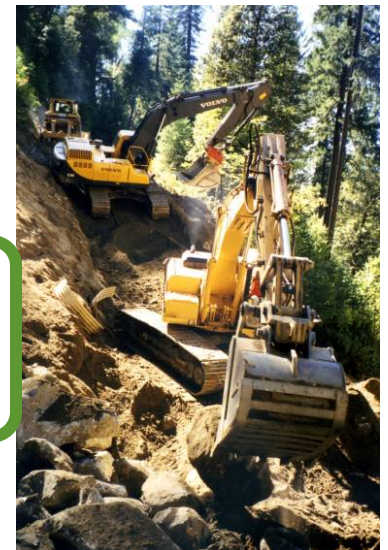


Before ground is broken, scientists, engineers and others survey and outline the project. **A diverse collection of expertise is needed to complete these projects, from technicians to office personnel.**

Agencies have growing needs for adaptation funding. The U.S. Forest Service alone has an estimated \$10 billion backlog of road removal and remediation projects – critical to restoring forest health and improving water quality for downstream users in a warming world.



Contractors and construction crews do the majority of the heavy lifting – such as excavating, removing packed soil, and planting new vegetation.



Communities benefit from clean air and water, and feel the **positive economic impacts from creating and projecting jobs.**

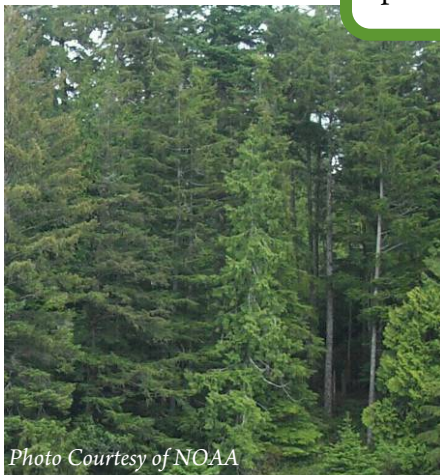
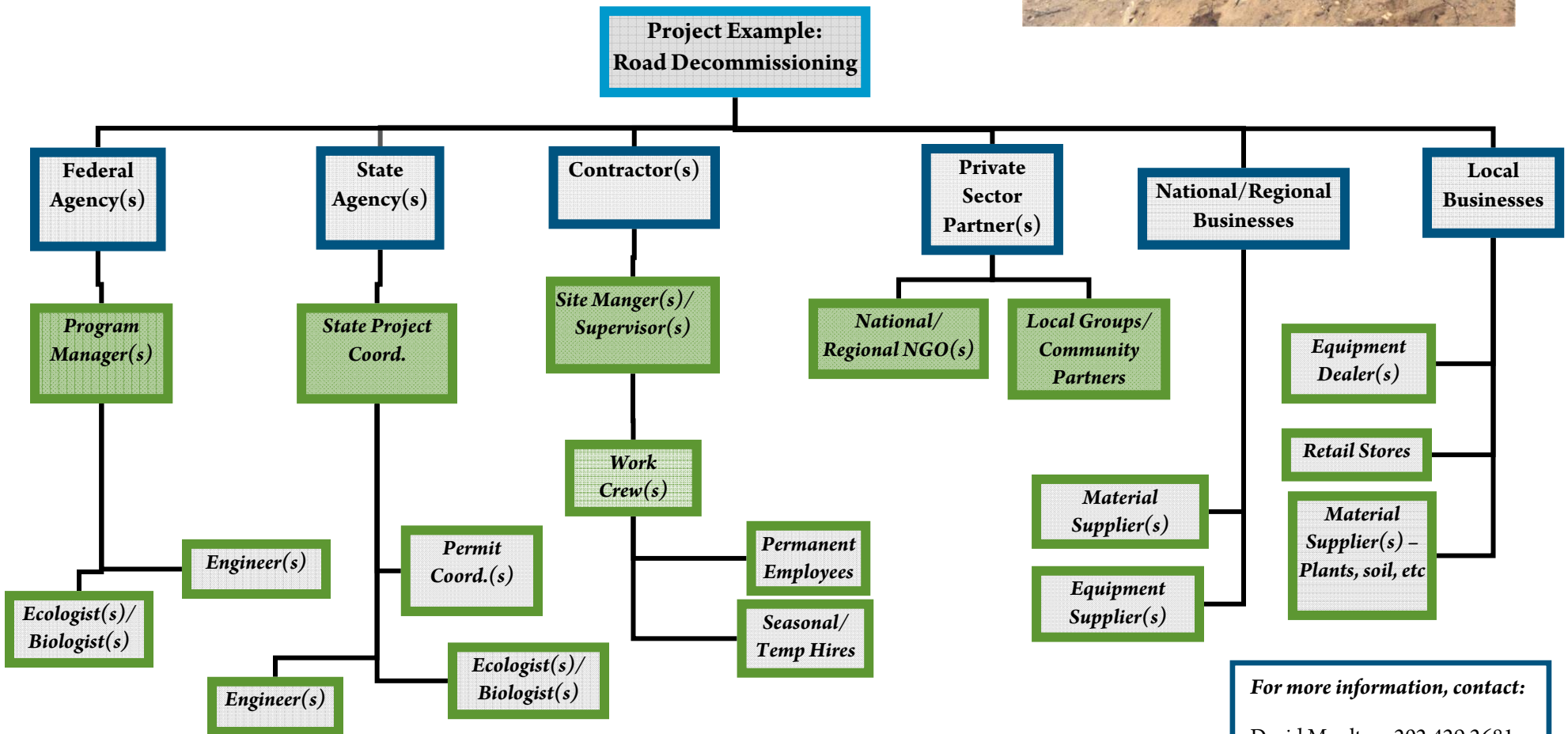


Photo Courtesy of NOAA

MOUNTAINSIDE TO SEASIDE:

*Creating Jobs that Revitalize the Rural Economy
and Protect Communities and Resources from
Climate Change*



For more information, contact:
David Moulton, 202.429.2681
JP Leous, 202.429.2676

All photos courtesy of David Burns unless otherwise noted