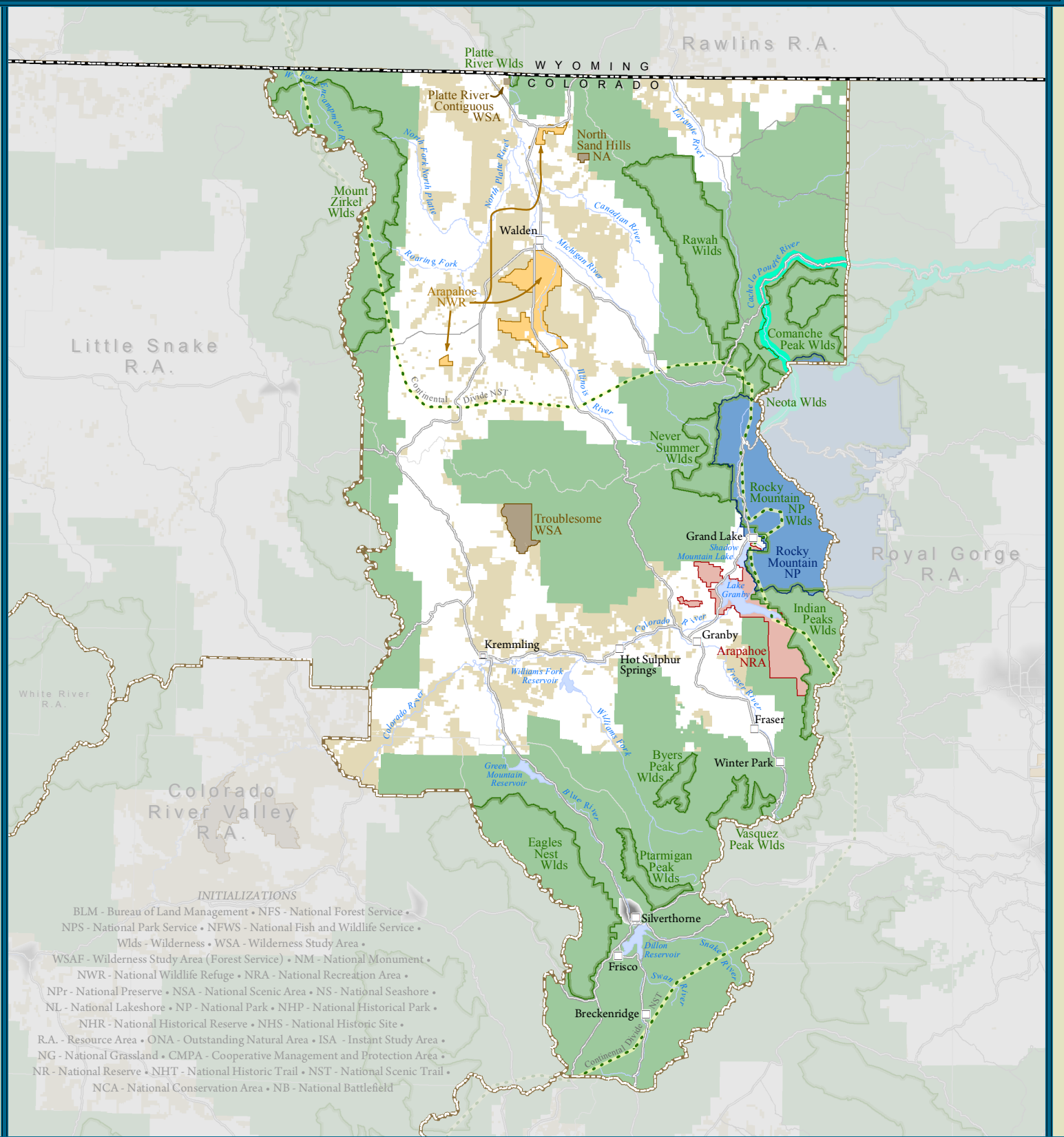


BUREAU OF LAND MANAGEMENT KREMMLING RESOURCE AREA



INITIALIZATIONS
 BLM - Bureau of Land Management • NFS - National Forest Service •
 NPS - National Park Service • NFWS - National Fish and Wildlife Service •
 Wlds - Wilderness • WSA - Wilderness Study Area •
 WSAF - Wilderness Study Area (Forest Service) • NM - National Monument •
 NWR - National Wildlife Refuge • NRA - National Recreation Area •
 NPr - National Preserve • NSA - National Scenic Area • NS - National Seashore •
 NL - National Lakeshore • NP - National Park • NHP - National Historical Park •
 NHR - National Historical Reserve • NHS - National Historic Site •
 R.A. - Resource Area • ONA - Outstanding Natural Area • ISA - Instant Study Area •
 NG - National Grassland • CMPA - Cooperative Management and Protection Area •
 NR - National Reserve • NHT - National Historic Trail • NST - National Scenic Trail •
 NCA - National Conservation Area • NB - National Battlefield

LEGEND

- | | | | |
|---------------------------------|--------------------------------|----------------------------|-----------------------------|
| Bureau of Land Management Lands | National Forest Service Lands | Wilderness Area | Wilderness Study Area (BLM) |
| National Park Service Unit | National Monument | National Conservation Area | National Recreation Area |
| National Preserve | National Wild and Scenic River | National Scenic Area (NFS) | Urban Area |
| National Wildlife Refuge (FWS) | Other BLM Designations | Other NFS Designations | |
| County Boundary | BLM Resource Area Boundary | State Boundary | |
| City | City (State Capital) | City (Major BLM Office) | |

