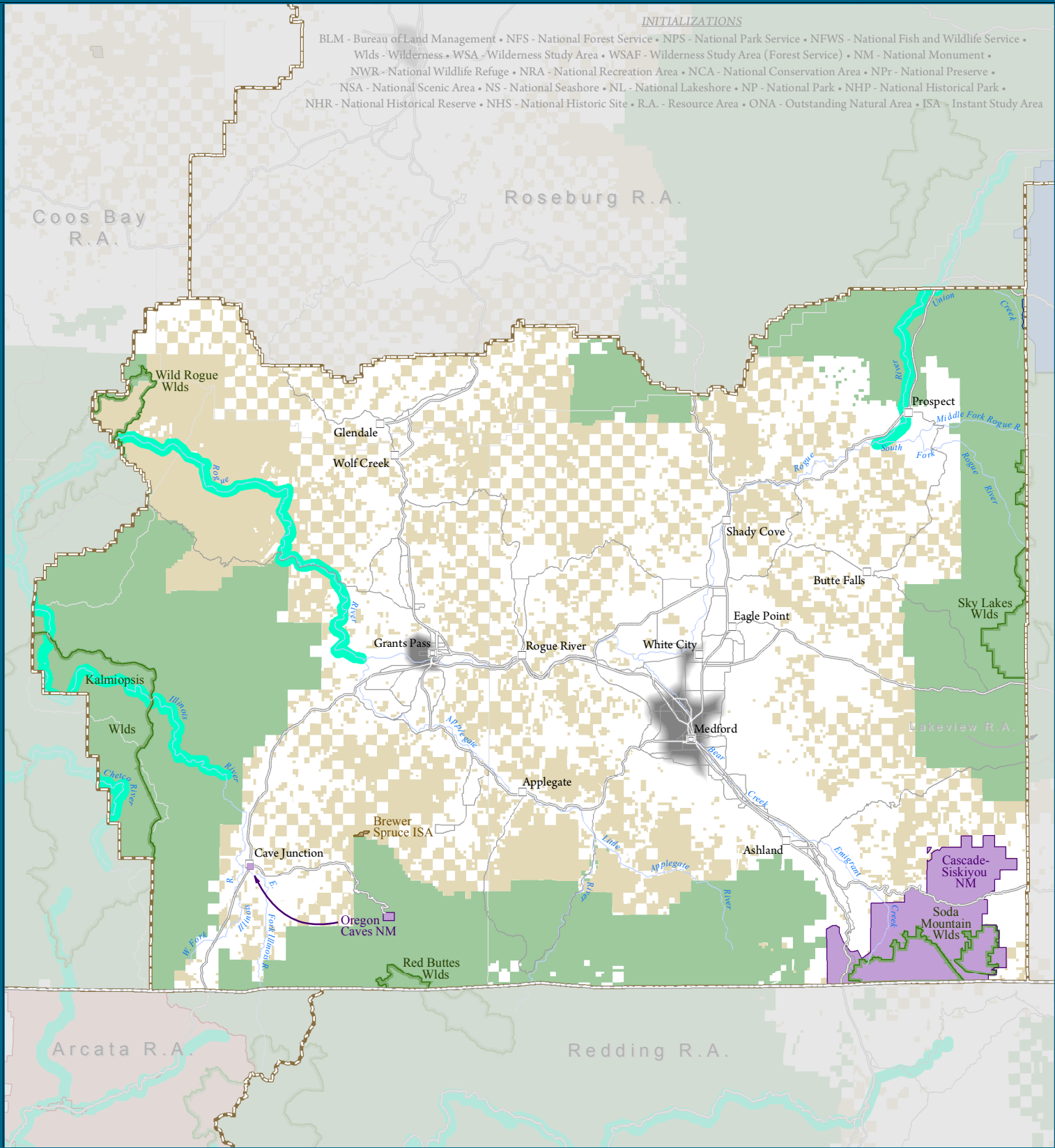


# BUREAU OF LAND MANAGEMENT MEDFORD RESOURCE AREA

## INITIALIZATIONS

BLM - Bureau of Land Management • NFS - National Forest Service • NPS - National Park Service • NFWS - National Fish and Wildlife Service • Wlds - Wilderness • WSA - Wilderness Study Area • WSAF - Wilderness Study Area (Forest Service) • NM - National Monument • NWR - National Wildlife Refuge • NRA - National Recreation Area • NCA - National Conservation Area • NP - National Preserve • NSA - National Scenic Area • NS - National Seashore • NL - National Lakeshore • NP - National Park • NHP - National Historical Park • NHR - National Historical Reserve • NHS - National Historic Site • R.A. - Resource Area • ONA - Outstanding Natural Area • ISA - Instant Study Area



## LEGEND

- |                                 |                                |                            |                             |
|---------------------------------|--------------------------------|----------------------------|-----------------------------|
| Bureau of Land Management Lands | National Forest Service Lands  | Wilderness Area            | Wilderness Study Area (BLM) |
| National Park Service Unit      | National Monument              | National Conservation Area | National Recreation Area    |
| National Preserve               | National Wild and Scenic River | National Scenic Area (NFS) | Urban Area                  |
| National Wildlife Refuge (FWS)  | Other BLM Designations         | Other NFS Designations     |                             |
| County Boundary                 | BLM Resource Area Boundary     | State Boundary             |                             |
| City                            | City (State Capital)           | City (Major BLM Office)    |                             |

